

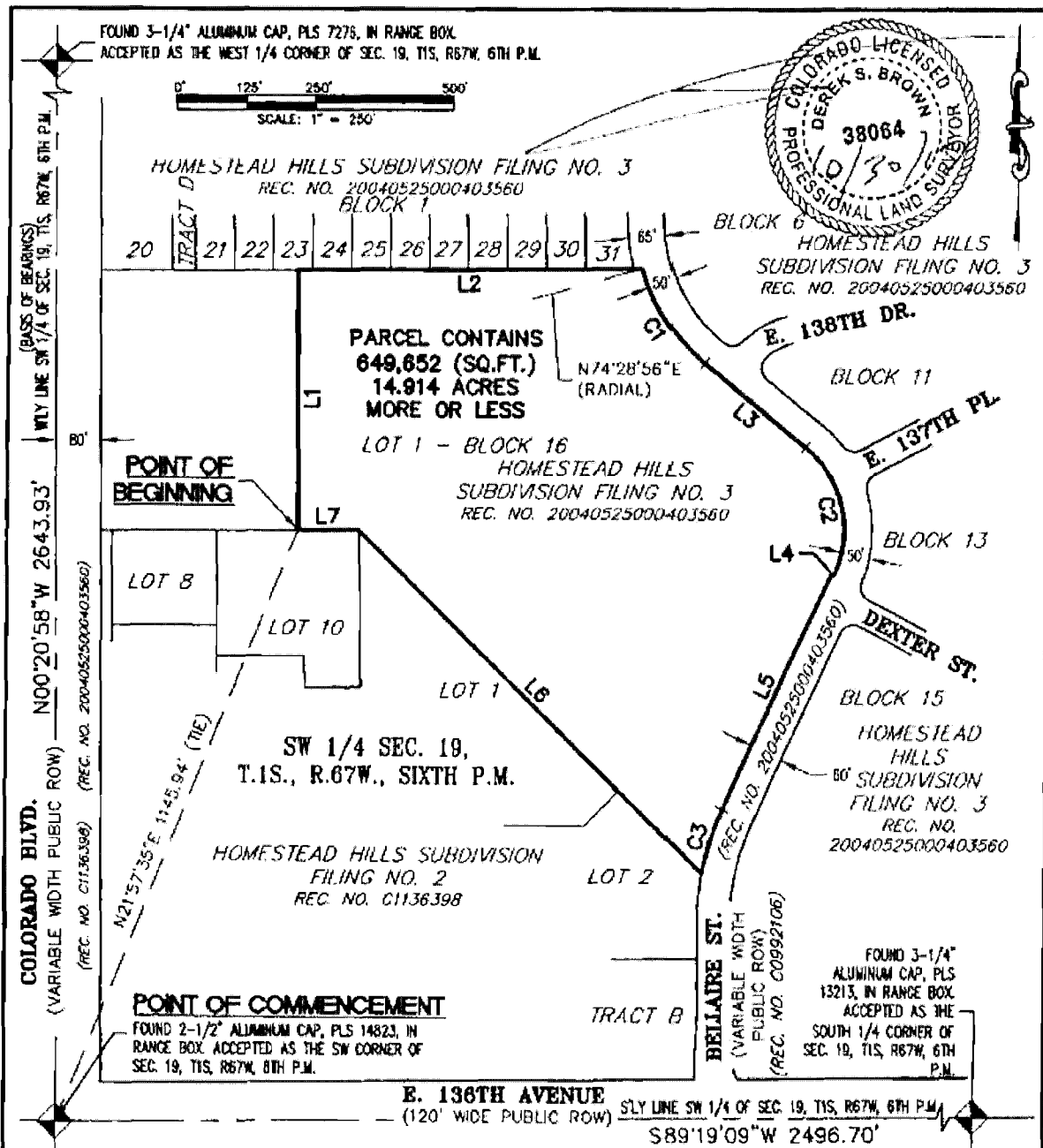
WHEN RECORDED RETURN TO:
WHITE BEAR ANKELE TANAKA & WALDRON
2154 East Commons Avenue, Suite 2000
Centennial, CO 80122

Homestead Hills Metropolitan District
(In the City of Thornton, Adams County, Colorado)

SPECIAL DISTRICT PUBLIC DISCLOSURE
Pursuant to § 32-1-104.8, C.R.S.

Name of District:	Homestead Hills Metropolitan District ("District")
Powers of the District:	All powers authorized in § 32-1-1004, C.R.S., including, but not limited to, fire protection, mosquito control, parks or recreational facilities or programs, traffic and safety controls, sanitation services, street improvements, television relay and translator facilities, transportation, water services, and solid waste disposal, subject to the limitations contained in the District's Service Plan.
Service Plan:	The District's Service Plan, which can be amended from time to time, includes a description of the District's powers and authority. A copy of the District's Service Plan is available from the Division of Local Government.
	Homestead Hills Metropolitan District is authorized by Title 32 of the Colorado Revised Statutes to use a number of methods to raise revenues for capital needs and general operations costs. These methods, subject to the limitations imposed by section 20 of Article X of the Colorado Constitution, include issuing debt, levying taxes, and imposing fees and charges. Information concerning directors, management, meetings, elections and current taxes are provided annually in the Notice to Electors described § 32-1-809(1), C.R.S., which can be found at the District office, on the District's web site, on file at the Division of Local Government in the State Department of Local Affairs, or on file at the office of the clerk and recorder of each county in which the special district is located.
District Boundaries:	A map of the District's boundaries is attached hereto as Exhibit A. Please note that the District's boundaries may change from time to time. Please contact the District for the latest information.

EXHIBIT A District Boundary Map ILLUSTRATION TO EXHIBIT A



NOTE: THIS DRAWING DOES NOT REPRESENT A MONUMENTED LAND SURVEY AND IS ONLY INTENDED TO DEPICT THE ATTACHED LEGAL DESCRIPTION.

PATH: _____
 OMC NAME: _____
 OMC: RBA CR: DSB
 DATE: 10-30-2017
 SCALE: 1" = 250'

Q:\21117-01 - Homestead Corporation Plan Legal\DWG\20180915
 100 East Harvard Ave
 Suite 1
 Littleton, Colorado 80120
 Phone: (303)785-1800
 Fax: (303)783-3897
 www.aztecconsultants.com

AZTEC
 CONSULTANTS, INC.
 Homestead Residential Boundary.dwg

RESIDENTIAL BOUNDARY
 SW 1/4 SEC. 19, T.1S., R.67W., 6TH P.M.
 COUNTY OF ADAMS, STATE OF COLORADO
 JOB NUMBER 121117-01
 2 OF 3 SHEETS